

# SWSS

Southern Weed Science Society

## What's Inside

Call for Paper/  
Poster Titles for  
2006 Annual Meeting . . . 3

Call for Officer and  
Award Nominations . . . . 5

Washington Report . . . . 6

People and Places . . . . 7

Did You Know? . . . . . 9

New Invasive Plants  
Publication from  
WSSA Fills Need for  
Planning Tool . . . . . 11

Position  
Announcements . . . . . 12

## President's Message

DAVID SHAW



I'd like to take this opportunity to highlight a few of the more important items from our just-completed Summer Board Meeting.

**SWSS Publications:** The "Encyclopedia of North American Weeds" DVD has sold very well this year; however, there's always room for improvement. Our keeping the SWSS in the black principally relies on sales of our excellent publications. Since we are a volunteer organization, every member needs to be a salesman for our products. This one is so easy to sell, it almost sells itself. But, folks still have to find out about it! Mike Defelice and Charles Bryson are actively working on the new book that has been tentatively titled "Weeds of the South." We're all extremely excited about the concept and quality that has been put into this publication. We hope to have this out in about two years.

**Board Composition:** The Long-Range Planning Committee provided the board with a written report on several items, one of which was how the board should be composed to reflect changes in our society. As you know, we currently have the executive board, and three members-at-large from industry and three from academia, plus a forestry representative. Historically we have been a production agriculture-oriented society, which was great in its time. However, as we all well know the landscape is changing, and if we don't accurately reflect these changes our society will continue to see declining membership and enthusiasm. One suggestion was to change this to the executive board plus a board of directors composed of representatives from each of the program sections (e.g. agronomic crops, pasture and rangeland, forestry, invasive species). This would ensure diversity of thought and guarantee that our members felt that their views could be effectively represented in the society's decision-making process. I'll be sending out an e-mail on the listserv later this summer on the topic (I'm sure that got a groan from some of you). We plan to have this as a major topic of discussion at the Business Meeting during the 2006 conference, so make plans now to attend and participate in the discussion.

**SWSS Management:** Bob Schmidt has done and continues to do a fine job in managing the affairs of our society. Last year Bob indicated that he will be thinking about retirement in about four years. Therefore, the board wants to be sure that the society is in a position to be able to remain functional upon his retirement (or if Bob was incapacitated for a period). Therefore, we have requested that he upgrade his accounting and membership database software, and provide frequent reports and copies of files to our Secretary/Treasurer.

*(continued on page 2)*

## PRESIDENT'S MESSAGE *continued from page 1*

**Future Conferences:** The board had received options for the 2007 and 2008 conference sites. After careful consideration of the different cities and properties, we have chosen to go to the Opryland Hotel in Nashville, TN January 20-25, 2007. It's been a number of years since we went to Opryland, but most remember it as one our best conferences ever. For 2008, we have chosen the Radisson Riverwalk in Jacksonville, FL. They provided an excellent bid, and Jacksonville is such a great town for conventions.

**2006 Conference Planning:** Jackie Driver and her Program Committee are doing an exceptional job in putting together this year's program, with the theme of "Vision for the Future." I'm sure she'll have more information elsewhere in the Newsletter, but I'd encourage each of you to 1) plan on attending, and 2) give Jackie input on what you'd like to see in the program. The Omni Hotel is a great facility, there are a number of great restaurants within easy walking distance, and the hotel is providing shuttle buses one night for us all to go down to the Riverwalk in San Antonio.

**SWSS Budget:** The board very seriously considered every aspect of the budget for the coming fiscal year, and has taken several actions to ensure that we have a bal-

anced budget. We have increased sustaining membership dues, created a new category of sustaining members for state weed science societies, reduced travel costs for board members, and eliminated the graduate student room reimbursement until such time that the Endowment Foundation can support this.

**Rob Hedberg Departing:** Rob has served the weed science societies well in his position as Director of Science Policy, and we all hate to see someone of his talent leave. However, this was a very good career opportunity for him, and we wish him the very best. Now, our job will be to find someone to try to fill his shoes in effectively representing the critical issues that face our discipline in Washington. I encourage you to promote this position to those you know who have the skill sets necessary for a position of this type.

In closing, I wish each of you the best as you go through the summer and prepare for the many activities of the fall. Our lives seem to get busier and busier; but in that don't forget what's important – your faith, your family, and your friends. The SWSS is one effective outlet for keeping up with lifelong friendships, while at the same time doing something that really matters professionally.

## INVASIVE SPECIES SESSION OF SWSS ANNUAL MEETING

The Invasive Species Session of the SWSS Annual Meeting in 2006 will focus on invasive grasses and sedges. Current plans are to devote half of the Session to a panel of speakers discussing various viewpoints on invasive grasses. The object of the panel discussion will be to present the multiple and sometimes conflicting sides of invasive grasses issues to illustrate the challenges we face in addressing them.

April Fletcher, who will Chair that Session, hopes to include a speaker who will discuss economic aspects of ornamental invasive grass-

es from the perspective of the horticultural industry; a state highway department representative to discuss challenges of reseeding using only natives after highway construction or renovation and why invasive grasses have sometimes been chosen over other native plants; a wildlife refuge biologist to discuss the impacts of invasive grasses on natural areas and the cost in fire control; someone to discuss why some invasive grasses are still being promoted for planting on rangeland, and possibly others.

Although she already has a wildlife refuge biologist lined up to

speak, none of the speakers on the other topics have been selected yet. If anyone knows of knowledgeable, dynamic speakers from the horticultural industry or a state highway department, a conservation district, or others who could address these aspects of invasive grasses, please e-mail April Fletcher at

[April\\_Fletcher@fws.gov](mailto:April_Fletcher@fws.gov)

by August 15, 2005 with a name, description of the individual's background and interests, and contact information.

# Call for Paper/Poster Titles for 2006 Annual Meeting

## INVITATION TO PRESENT A PAPER OR POSTER

You are invited to submit titles for papers and posters at the 2006 annual meeting of the Southern Weed Science Society on January 23-26, 2006. Papers and posters may be submitted to one of the following sections for grouping purposes.

- Weed Management in Agronomic Crops
- Weed Management in Turf
- Weed Management in Pastures and Rangeland
- Weed Management in Horticultural Crops
- Forest Vegetation Management
- Utilities, Railroads, Highway Rights-of-Way, Industrial
- Physiological and Biological Aspects of Weed Control
- Educational Aspects of Weed Control
- Regulatory Aspects of Weed Control
- Invasive Species
- Updates from Industry
- Soil and Environmental Aspects of Weed Science

In 2006, the paper sessions will consist of 15 or 30 minutes presentations. Some sessions will include a symposium format in thematic topics. Periods for discussion will be liberally interspersed in the session. Section chairs are:

### **Agronomic Crops:**

James Holloway  
[james.holloway@syngenta.com](mailto:james.holloway@syngenta.com)

### **Turf:**

Scott McElroy  
[mcelroy@utk.edu](mailto:mcelroy@utk.edu)

### **Pasture and Rangeland:**

Twain Butler  
[tjbutler@noble.org](mailto:tjbutler@noble.org)

### **Horticultural Crops:**

Jason Norsworthy  
[jnorswo@clemsun.edu](mailto:jnorswo@clemsun.edu)

### **Forest Vegetation Management:**

Michael Blazier  
[MBlazier@agcenter.lsu.edu](mailto:MBlazier@agcenter.lsu.edu)

### **Utilities, Railroads, Rights-of-Way and Industrial Sites:**

Doug Montgomery  
[doug.montgomery@okstate.edu](mailto:doug.montgomery@okstate.edu)

### **Physiology, Biology, and Ecology:**

Shawn Askew  
[saskew@vt.edu](mailto:saskew@vt.edu)

### **Educational Aspects:**

David Jordan  
[david\\_jordan@ncsu.edu](mailto:david_jordan@ncsu.edu)

### **Regulatory Aspects:**

Jerry Wells  
[jerry.wells@syngenta.com](mailto:jerry.wells@syngenta.com)

### **Invasive Species:**

April Fletcher  
[April\\_Fletcher@fws.gov](mailto:April_Fletcher@fws.gov)

### **Industry Updates:**

Todd Baughman  
[ta-baughman@tamu.edu](mailto:ta-baughman@tamu.edu)

### **Soil and Environmental Aspects:**

Nilda Burgos  
[nburgos@uark.edu](mailto:nburgos@uark.edu)

### **Posters:**

Peter Dotray  
[p-dotray@tamu.edu](mailto:p-dotray@tamu.edu)

Members are encouraged to contact section chairs with topics for sessions, and to suggest (or volunteer as) speakers for these sessions. Graduate students are welcomed to participate in the symposia or special topic sessions.

Graduate students, regardless of whether or not they enter the paper contest, will be allowed to submit an oral presentation or poster just as in the past.

## SUBMISSION OF TITLES

Title submissions for 2006 will be via the SWSS website (<http://www.swss.ws>). The "Title Submission Form" and instructions for submission are on the website and are due September 15, 2005. Program and instructions for abstracts will be sent to the presenter in November.

Graduate students will follow the same procedures as in the past. Indicate "graduate student" on the title submission form, and you will be allowed to choose either paper or poster sessions for submission.

Participation in symposia focused on thematic topics will be organized by section chairs. The SWSS website will have a separate section for title submission for symposia presentations.

*(continued on page 4)*

## CALL FOR PAPER/POSTER TITLES

*(continued from page 3)*

### PRESENTATIONS OF PAPERS

ONLY LCD PRESENTATIONS WILL BE USED AT THE 2006 SWSS MEETING.

To ensure quality presentations and a smooth transition from presentation to presentation all presenters will be required to follow the directions provided below by the Computer Applications Committee, and by the section chair.

All presentations must be in PowerPoint 2000 for MS Windows (PC compatible). MacIntosh /Apple formats will not be supported.

The presentation size should be 25MB or less. Audio clips or sound are not allowed. Limit fonts used in the presentation to basic ones such as Times New Roman, Arial, Courier, or similar equivalents. Not all computers used at the meeting will support all fonts. To compress the pictures in your slideshows:

- Save a full-resolution version of your slideshow under another name for our own use later.
- Select "Tools"
- Select "Customize"
- Click on the "Picture Toolbar" Box (This will place a new toolbar on PowerPoint.)

The compress icon is the square with four arrows pointing inward (like compressing).

After you click on the icon, you will be prompted with several choices. You can compress an individual photo or compress all photos in the a slideshow (you should compress all).

- Choose the "Projection, 96 dpi" choice for your SWSS slideshow.

Animation is discouraged. Permission to use a video must be prearranged. Contact the section chair before the meeting if you plan to use a video clip. SWSS cannot guarantee proper functioning of the video.

Presentations must be presented to the section chair on a CD-R (not a CD-RW). Presenters for Monday afternoon sessions MUST have their presentations to the section chair prior to 9:00 am January 23 for loading. Presentations for the remainder of the meeting must be presented to the section chair by 4:00 pm the day prior to the presentation being given. All editing of the presentation should be completed prior to submission.

You may bring your presentation on a jump drive, however, the SWSS assumes no responsibility for "Jump drive" compatibility, and recommends a CD-ROM for backup.

Presenters will not be allowed to use their own computers in the sessions.

More details will be provided in December as to the location for submitting the presentation to the section chair.

### POSTER PRESENTATIONS

No substantive changes have been made in the rules for poster presentation at the 2006 conference. More information will be provided in the next newsletter, or you can go to the Manual of Operating Procedures section of the SWSS website (<http://www.swss.ws>).

### STUDENT INFORMATION

Students may enter the "Student Paper Contest" and "Student Poster Contest" only one time during such degree program. Students may not enter both the paper and poster contest in the same year. Rules for the contest are posted on the SWSS website (<http://www.swss.ws>), in the Manual of Operating Procedures section. See judges worksheets in subsequent pages of the newsletter.

Specific questions regarding the student contests should be directed to:

Chris Tingle  
U of A Cooperative Extension Service  
2301 S. University Avenue  
Little Rock, AR 72204  
501-671-2278, office  
501-671-2297, fax  
[ctingle@uaex.edu](mailto:ctingle@uaex.edu)

If you have questions pertaining to submitting titles for the 2006 meeting, contact:

Jackie Driver  
Syngenta Crop Protection, Inc.  
110 Twisted Oak Lane  
Crawford, TX 76638  
254-848-5650, office  
254-723-4825, cell  
254-848-7333, fax  
[jackie.driver@syngenta.com](mailto:jackie.driver@syngenta.com)

### NEWSLETTER SUBMISSION Instructions and Deadlines

ISSUE	DEADLINE
December . . . . .	November 1, 2005

Please send text information as Microsoft Word or WordPerfect files, and pictures as JPEG or BMP files to:

**AL RANKINS, JR., Editor**  
Box 9555  
Mississippi State, MS 39762  
Telephone 662-325-3341  
E-mail: [arankins@pss.msstate.edu](mailto:arankins@pss.msstate.edu)

# Call for Officer and Award Nominations

## Nominations Requested

This is a request to all SWSS members to supply the nomination committee with names of individuals to serve on the Board of Directors. Nominations are needed for Vice President, Member-at-Large (2 positions – public sector and private sector), and Endowment Foundation Board of Trustees. All SWSS members are eligible to serve as an officer. Please take time to nominate people for these important positions. The description of each position is listed in the “Manual of Operating Procedures” which may be found on the SWSS web site ([www.swss.ws](http://www.swss.ws)). Send your nominations for the various officers to: John S. Harden, P O Box 13528, Research Triangle Park, NC 27709-3528 or email at [hardenj@basf.com](mailto:hardenj@basf.com).

### SWSS Awards

Each year the SWSS recognizes excellence by members with several awards. Our Society has numerous people that should be recognized for their efforts and expertise. The awards are:

Distinguished Service Award, Academia

Distinguished Service Award, Industry

Weed Scientist of the Year

Outstanding Educator

Outstanding Young Weed Scientist, Academia

Outstanding Young Weed Scientist, Industry

Outstanding Graduate Student, MS

Outstanding Graduate Student, Ph.D.

Qualification and nomination forms are listed under “Awards” which may be found on the SWSS web site ([www.swss.ws](http://www.swss.ws)).

Contact John S. Harden should you have questions at 919-547-2019 or [hardenj@basf.com](mailto:hardenj@basf.com).

Award Nominations are due September 30, 2005 to the respective Chairs of each award Sub-committee. The chairs are as follows:

- **Distinguished Service Award,**  
W. K. Vencill;  
[wvencill@uga.edu](mailto:wvencill@uga.edu)
- **Weed Scientist of the Year,**  
Larry Nelson;  
[lnelson@clermson.edu](mailto:lnelson@clermson.edu)
- **Outstanding Educator,**  
T. F. Peeper;  
[peepert@okstate.edu](mailto:peepert@okstate.edu)
- **Outstanding Young Weed Scientist,**  
S. W. Murdock;  
[shea.w.murdock@monsanto.com](mailto:shea.w.murdock@monsanto.com)
- **Outstanding Graduate Student,**  
A. W. Ezell;  
[aezell@cfr.msstate.edu](mailto:aezell@cfr.msstate.edu)

# WASHINGTON REPORT

by Rob Hedberg, Director of Science Policy

## DAVID SHAW PROVIDES CONGRESSIONAL BRIEFING

Friday, May 13 was not an unlucky day for the weed science discipline or David Shaw, Director of the GeoResources Institute at Mississippi State University. That morning Dr. Shaw gave a briefing, “*Down to Earth Science from Outer Space – Applying NASA Technologies and Interagency Collaborations to Advance Agricultural Science and Natural Resource Management*” to congressional staff from both the U.S. House and Senate as well as several attendees from Federal Agencies and the private sector. After his introduction by Dr. Rodney Brown, Deputy Undersecretary for Research, Education and Economics at USDA, David gave an excellent overview of real and emerging earth science applications of remote sensing data combined with modern computing capacity. David did an outstanding job conveying the value of federally funded research conducted at Land Grant Universities as well as the contributions weed scientists are making to science, agriculture and natural resource management.

This briefing was conducted by NCFAR (the National Coalition on Food and Agricultural Research), a coalition that WSSA officially joined last year. This briefing was the third in a series that NCFAR has launched to provide congressional staff with a timely overview of scientific frontiers in food and agriculture research and to instill them with an appreciation of the value of federal investments in such research. It was personally gratifying to see how David created a new appreciation for weed science among NCFAR members and congressional staff.

## WEED SCIENCE TO HOST CONGRESSIONAL BRIEFING ON ENDANGERED SPECIES/ INVASIVE SPECIES

On Wednesday June 15, WSSA will sponsor a briefing for the House Resources Committee to explore the connections between invasive weed management and the enhancement of critical habitats to promote endangered species recovery. Cosponsors for this briefing now include the Aquatic Ecosystem Restoration Foundation, The Aquatic Plant Management Society, the Wildlife Management Institute, the Nature Conservancy and BASF. The opportunity to present this briefing grew out of the successful symposium held on this topic during the Northeast Weed Science Society annual meeting here in Washington in January. (Presentations are posted on the NEWSS website – NEWSS.org).

The significance of this briefing is that the House Resources Committee chaired by Congressman Pombo (R-CA) is spearheading efforts to revise and reform the Endangered Species Act. By being invited to present this briefing we will have an opportunity to promote recognition of noxious and invasive weeds as a significant threat to T&E species. Furthermore we will be able to encourage pragmatic revisions in the bill so that noxious weed management will be recognized as a legitimate method of enhancing the quality of critical habitats and promoting endangered species recovery.

## WSSA TO RECEIVE GRANT FOR NIWAW VII FROM NATIONAL FISH AND WILDLIFE FOUNDATION

The National Fish and Wildlife

Foundation (NFWF) has informed WSSA that we will receive a Pulling Together Initiative (PTI) grant for \$15,500 to help expand the NIWAW outreach activities and promote the establishment of Cooperative Weed Management Associations (CWMAs) across the country. This welcome news comes at a time when Dr. Nelroy Jackson assumes the chairmanship of the NIWAW VII planning committee on behalf of WSSA. The plans for NIWAW VII are already off to a very promising start with substantial new offers of support and involvement from many of the partners who recognize the value of this event that has now grown into an annual conference. When you can, please thank Dr. Jackson for his willingness to take on this important role and mark your calendars now for the week of February 26 through March 3.

## THANK YOU

I want to take this opportunity to express my sincere thanks to all members of WSSA, APMS, NEWSS, NCWSS, SWSS and WWSWS for the opportunity to serve as your representative in Washington for the past six years. I have accepted an offer to work for USDA-CSREES as the agency’s Science Policy and Legislative Affairs Advisor and will assume that post in July. As I prepare to move on, I can honestly say this is the best job and most fun I have ever had working for a living. The members of the societies are great, the mission of the societies is worthwhile and the opportunities to have positive impact are significant. I’ll move on with a tinge of regret but I am confident that the momentum we have created can be maintained. I must especially thank Rich Bonanno

(continued on page 8)

# PEOPLE & PLACES

**Ken Hutto** recently completed requirements for a Ph.D. in weed science under the direction of Drs. David Shaw and John Byrd. Ken has accepted a position as a Post-Doctoral Research Associate with Drs. Barry Brecke and Brian Unruh at the University of Florida. Ken will be stationed at the West Florida Research and Education Center/Jay Research Farm in Jay, FL. His primary responsibilities will be in turfgrass weed management research, but will also have weed management responsibilities in cotton and peanut.

\* \* \* \* \*

**Brandon Joy** completed the requirements for a Master of Science degree at Texas Tech University in May 2005, while employed by the Texas Agricultural Experiment Station in Lubbock. His thesis topic was entitled "Application timings and rates in Roundup Ready Flex cotton" and was directed by Wayne Keeling and Peter Dotray. Brandon is currently the Operations Manager for Corn, Sorghum, Cotton Ag Chemical LLC in Plainview, Texas.

\* \* \* \* \*

**Chris Main** has accepted a faculty position at Clemson University, where his area of responsibility will be agronomic crops (70/30 Extension/Research). Dr. Main will be located at the PeeDee Research and Education Center near Florence, South Carolina. He completed his Ph.D. at the University of Tennessee under the direction of Tom Mueller. Dr. Main's dissertation examined glyphosate-resistant horseweed management under field conditions, ecology, and physiological aspects of sus-

ceptible and resistant plants soon after glyphosate application.

\* \* \* \* \*

**K. Marty McCormick** completed the requirements for a Master of Science degree at Texas Tech University in May 2005. His thesis topic was entitled "Comparison of glufosinate-tolerant, glyphosate-tolerant, and non-transgenic cotton weed control systems" and was directed by Peter Dotray and Wayne Keeling. Marty is currently an Assistant Superintendent at Bent Tree Country Club in Dallas.

\* \* \* \* \*

**Ronald E. Talbert**, University Professor of weed science in the Department of Crop, Soil, and Environmental Sciences, Dale Bumpers College of Agricultural, Food and Life Sciences, retired in May after almost 42 years but continues to serve the university as University Professor Emeritus.

Dr. Talbert was raised on a farm near Toulon, IL, and moved to a farm near Vandalia, Missouri, during his freshman year in high school. He earned his B.S. degree in Agriculture (Soils) from the University of Missouri and continued for his M.S. and Ph.D. degrees in Agriculture (Field Crops Weed Control). Dr. Talbert joined the Agronomy faculty at the University of Arkansas as Assistant Professor in 1963. He was promoted to Associate Professor in 1968, to Professor in 1973, and to University Professor in 1990. He served as Interim Head of the Agronomy Department from 1980-81.

Dr. Talbert is a leading researcher on herbicide resistance in weeds; weed biology and control in rice; weed control in horticultural crops; behavior, persistence, and fate of herbicides in soil; and selectivity of herbicides. He has authored numerous journal articles, abstracts, and Ex-

periment Station research series detailing his research results. His publication entitled "The Adsorption of Some *s*-Triazines in Soil," published in *Weeds* in 1965, was recognized as a Citation Classic in 1986. Dr. Talbert taught undergraduate and graduate courses, including Introduction to Weed Science, Principles of Weed Science, and Herbicide Behavior, and guest-lectured in other courses in the college. He served as major advisor to 68 graduate students and mentored 192 students who completed the weed science graduate program at the University of Arkansas. He was awarded the Weed Science Society of America (WSSA) Teacher Award in 1998 and the Southern Weed Science Society (SWSS) Outstanding Educator award in 1999.

In addition to honors for teaching, Talbert has received numerous national and regional awards. In 1989, he was honored by President George W. Bush for Outstanding Achievement to the Volunteers in Overseas Cooperative Assistance. Among the awards that followed included WSSA Fellow in 1990; SWSS Distinguished Service Award in 1990; Arkansas Horticulture Society Recognition Award for Outstanding Service and Contribution to Horticulture in 1990; Gamma Sigma Delta Research Award of Merit in 1990; SWSS Weed Scientist of the year in 1991; IR-4 Meritorious Service Award in 1991; Southern Crop Protection Association Honorable Mention for Ambassador of the Year in 1995; Spitze Land Grant Award in 1998; and John W. White Outstanding Team Award in 2002.

Dr. Talbert served on numerous university, state, regional, and national committees during his tenure. He was Secretary/Treasurer of SWSS from 1972 to 1974 and president of the society in 1985-86 and served on many SWSS and WSSA committees.

Dr. Talbert and his wife Alice live in Fayetteville. They have three chil-

(continued on page 8)



## — New release!

This award winning DVD-ROM includes:

- 447 weed species with descriptions and maps
- interactive identification key to all weeds in the program
- extensive interactive educational lessons, quizzes, and games on the principles of plant identification
- illustrated glossary of 565 botanical terms, and
- "Intriguing World of Weeds" articles on the history, impacts, and uses of weeds throughout recorded history.

**New!** Version 3.0 is bigger (XGA - 1024 x 768 pixel graphics) and better (over 2400 photos).

Visit the On-line Demo at:

<http://www.thundersnow.com/weedid.htm>

Price: New copies are \$59.95 each + \$5.00 S&H US, or \$10.00 S&H international each. Upgrade from Version 2.0/2.1 is just \$49.95 + \$5.00 shipping & handling each in the US, or \$10.00 S&H each for international orders.

Name \_\_\_\_\_

Department/Organization \_\_\_\_\_

Address \_\_\_\_\_

City \_\_\_\_\_ State/Province \_\_\_\_\_

Zip/Postal Code \_\_\_\_\_ Country \_\_\_\_\_

Windows®  
**DVD**

*Remittance to accompany order. Send your order to the Southern Weed Science Society (SWSS), 1508 West University Avenue, Champaign, IL 61821-3133. For credit card or purchase order, telephone (217) 352-4212.*

### PEOPLE & PLACES

*(continued from page 7)*

dren and four grandchildren. Dr. Talbert will continue working with weed control in vegetable crops and advising his last graduate students as they complete their research.

\* \* \* \* \*

### Changes in Monsanto Technology Development organization in the Southern US

Shea Murdock has moved from his Lubbock, Texas field development role to become Roundup Ready Flex Cotton Product Manager in St. Louis.

Kent Croon has left the Roundup Ready Flex Cotton Product Manager position to become Regional Technology Development Manager for the Coastal West US organization.

In addition, the following Emergent Genetics Tech Reps have joined Monsanto:

David Guthrie will be a Technology Development Rep in Alabama.

Andy White will be a Technology Development Rep in Mississippi.

Kenny Melton will be a Technology Development Rep in West Texas.

Lloyd McCall will be Technology Development Manager-Cotton Germplasm.

### WASHINGTON REPORT

*(continued from page 6)*

who has served steadfastly as Chair of the Washington Liaison Committee from the time I was hired and through the whole time I have been Director of Science Policy. Rich has performed an enormous service for the societies and has been an excellent source of support and counsel the whole time. Please let Rich know his efforts are appreciated as he now spearheads the effort to hire your next Director of Science Policy.

Thank you,  
Rob Hedberg



# DID YOU KNOW?

## How to get the most from the *Interactive Encyclopedia of North American Weeds*

The *Interactive Encyclopedia of North American Weeds* DVD-ROM contains detailed weed descriptions for every species in the book, and the in-depth *Intriguing World of Weeds* series of articles from the Weed Science Society of Americas *Weed Technology* journal. These full-length descriptions and articles are part of what makes the DVD-ROM “encyclopedic.” However, most people find it difficult or uncomfortable to read long articles of text on a computer screen. The DVD provides a way to copy the text of the weed descriptions, World of Weeds articles, and the glossary descriptions to another program such as MS Word so you can print them for more convenient reading, or to copy short sections of text or references to a report or lesson.

At the bottom of each weed description, glossary term, or *Intriguing World of Weeds* article you will find a button labeled “Copy Text.” When you are on a page where you want to copy the text into the Windows clipboard simply click on the “Copy Text” button. After you click on the “Copy Text” button the text on the page will be highlighted and a dialog box will appear with the message “Text of this weed description/definition has been copied to the Windows clipboard and can now be pasted into another program.” Click on the “OK” button to close the dialog box and return to the program.

Now that you have the text in the clipboard you can switch to another program to paste the text into a document for printing. We will describe using Microsoft Word, but any program that can accept text will work. Open Microsoft Word and create a new blank document. Now click on “Edit” in the toolbar and select “Paste” in the drop-down menu. Presto! You now have the text in a Word document that you can print or use to copy and paste short sections of text into another document. However, you will notice one artifact. All the words that were “hotwords” in the DVD are now double-underlined. This can be distracting while reading. To solve this simply select all the text in the document (Edit>Select All in the toolbar). With all the text selected, click once on the “Underline” icon in the toolbar to underline all the text. Now click once more on the “Underline” icon to remove underlining from all of the text. All of the underlining will be removed including the double underlines. All other formatting including italics, typefaces, etc will be preserved. Now you are ready to print and read!

Please remember that the weed descriptions and glos-

sary are the Copyright of the Southern Weed Science Society of America, and the *Intriguing World of Weeds* articles are the Copyright of the Weed Science Society of America. Copying the text in the DVD should only be for your personal use, or for scholarly or teaching purposes. Redistribution of this material is not allowed without obtaining permission from the Copyright owners.

Look for more short tips on ways to get the most from the *Interactive Encyclopedia of North American Weeds* DVD-ROM in the future. If you have any tips or questions you would like to see answered in a short article, e-mail them to Mike DeFelice at michael.defelice@thundersnow.com. If you don't yet have a copy of the *Interactive Encyclopedia of North American Weeds* DVD-ROM it can be ordered from the SWSS by going to their web site at <http://www.swss.ws>, the DVD web site at <http://www.thundersnow.com/weedid.htm>, or by calling Bob Schmidt at (217) 352-4212. Be sure to mention you heard about the DVD from the SWSS!

## NEWSLETTER SUBMISSION Instructions and Deadlines

ISSUE / DEADLINE

December . . . . . November 1, 2005

Please send text information as Microsoft Word or WordPerfect files, and pictures as JPEG or BMP files to:

**AL RANKINS, JR., Editor**

**Box 9555**

**Mississippi State, MS 39762**

**Telephone 662-325-3341**

**E-mail: [arankins@pss.msstate.edu](mailto:arankins@pss.msstate.edu)**

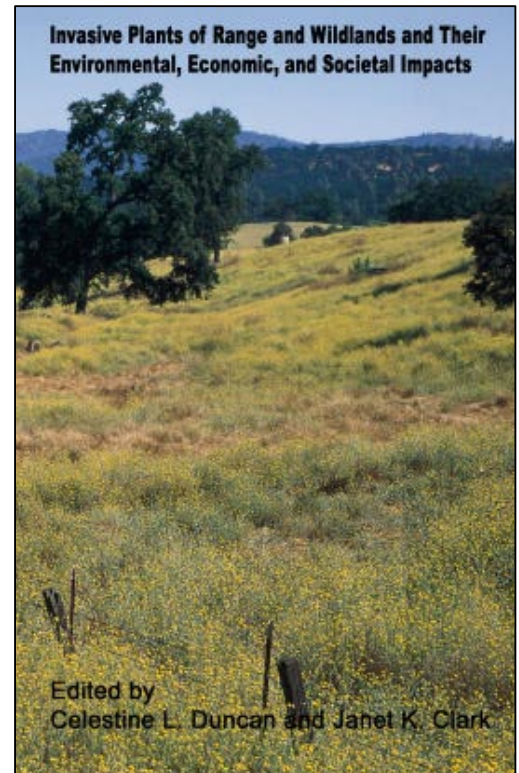
# Invasive Plants of Range and Wildlands and Their Environmental, Economic, and Societal Impacts

An invaluable reference for researchers, weed control specialists, and natural resource planners and policymakers, this book provides comprehensive references to scientific studies that quantify the impacts of sixteen invasive plants on our environment, economy, and society. Data also offer evidence of the extent of infestations in the continental United States and the historical spread rate of these species.

Range and wildland species highlighted in this volume are Canada thistle, Dalmatian toadflax, diffuse knapweed, downy brome, hawkweed, leafy spurge, medusa-head, musk thistle, perennial pepperweed, purple loosestrife, Russian knapweed, saltcedar, sericea lespedeza, spotted knapweed, tropical soda apple, and yellow starthistle.

For each species, national databases and scientific literature collections of experts were consulted to uncover historical as well as the most up-to-date impact information. In some cases, a lack of scientific data points to research gaps that deserve immediate attention.

Published by the Weed Science Society of America, this book provides readers succinct summaries and references that will be valuable to prioritizing management programs and formulating consistent and rational land management decisions.



\*\*\*\*\***ORDERING INFORMATION**\*\*\*\*\*

Name: \_\_\_\_\_  
 Address: \_\_\_\_\_  
 City: \_\_\_\_\_ State: \_\_\_\_\_ Zip: \_\_\_\_\_  
 Phone: \_\_\_\_\_  
 Fax: \_\_\_\_\_  
 Email: \_\_\_\_\_

\$20.00 per copy x \_\_\_\_\_ Copies = \$ \_\_\_\_\_

Check \_\_\_\_\_ Check Number \_\_\_\_\_

Visa  MasterCard

Name on Card: \_\_\_\_\_

Card Number: \_\_\_\_/\_\_\_\_/\_\_\_\_/\_\_\_\_ Exp Date \_\_\_\_/\_\_\_\_

Signature: \_\_\_\_\_

**Online at:**

www.wssa.net

**By Mail:**

**Weed Science Society of America**  
 P.O. Box 7050  
 810 E. 10th St.  
 Lawrence, KS 66044-7050

**By Fax:**

**Weed Science Society of America**  
 785-843-1274

**By Phone:**

800-627-0629

# New invasive plants publication from WSSA fills need for an important planning tool

**May 2005** – The Weed Science Society of America (WSSA) recently published what has been hailed as the best, most comprehensive information on environmental and economic impacts of invasive plants available today. With references to over 750 scientific studies, *Invasive Plants of Range and Wildlands and Their Environmental, Economic, and Societal Impacts* is a valuable reference for scientists, weed control specialists, resource planners and policymakers who want comprehensive information on acreage infested, rate of spread, and damage caused by sixteen invasive plant species.

“There are some excellent reference books available that describe weed biology, ecology, and management, but few focus extensively on documented damages caused by invasive plants,” says the book’s co-editor Celestine Duncan. “This information will be critical to quantifying societal losses, prioritizing weed management programs, and forming rational and consistent management decisions.”

Katherine Smith, Director of Resource Economics with the USDA Economic Research Service, is enthusiastic about this new resource. “Its straightforward summarization of a large amount of published work makes it a more useful and decidedly more credible reference than sources that ‘cherry-pick’ to arrive at some bottom-line figure using incompatible research findings.”

John Jachetta, a Senior Research Scientist with Dow AgroSciences LLC, conceived the idea to compile this information in response to land managers expressing a need for quantitative evidence of the perceived losses associated with invasive plants in natural areas. “The original goal of this project was to assess the impact of invasive plants on rangeland and wild lands in the U.S., and then use the information to prioritize research efforts and fill any gaps in the current database. Once we started pulling the information together, we quickly realized the value that this material would have to natural resource planners, policy makers, or anyone who needs quantitative evidence of weed impacts to support their programs.”

The Weed Science Society of America Federal Noxious Weed Committee, western state weed coordinators, and Dow AgroSciences selected sixteen of the most ecologically and environmentally important invasive plant species in the United States for this review based

on their perceived impacts, extent of infestation, and geographic region. Highlighted in this volume are Russian knapweed, musk thistle, diffuse knapweed, yellow starthistle, spotted knapweed, Canada thistle, hawkweed, perennial pepperweed, leafy spurge, *Serecia lespedeza*, purple loosestrife, downy brome, medusahead, Dalmatian toadflax, tropical soda apple, and saltcedar.

Duncan, along with professionals representing research, industry, and academic disciplines, compiled existing information on 16 invasive plants from national databases, scientific studies, and expert knowledge. The organization of the book allows quick and easy reference to eight categories of impacts including livestock and wildlife; plant communities; rare, sensitive, and threatened species; community function; soil and water resources; human health; economics; and value and use. General descriptions of the taxonomy, botanical characteristics, susceptible habitats, plant distribution, and spread and reproduction are also summarized for each invasive plant species.

The book can be purchased from the Weed Science Society of America through their secure website ([www.wssa.net/publications.html](http://www.wssa.net/publications.html)), or by phone (800/627-0629). Additional information and order forms are available by contacting Melissa Brown at 406/558.4568 or [IPRWmarketing@bresnan.net](mailto:IPRWmarketing@bresnan.net). Don’t miss the opportunity to add this important volume to your library. Order a copy today!

## About WSSA

The Weed Science Society of America promotes research, education, and extension outreach activities related to weeds; provides science-based information to the public and policy makers; and fosters awareness of weeds and their impacts on managed and natural ecosystems.

# POSITION ANNOUNCEMENTS

## University of Kentucky Research and Teaching Position in Temperate/ Transition Zone Grasslands Department of Plant & Soil Sciences

### **JOB TITLE:**

Assistant or Associate Professor

### **JOB DESCRIPTION:**

This is an 85% research and 15% teaching, full time (12-month) tenure track position at the University of Kentucky in Lexington.

### **RESPONSIBILITIES:**

The appointee is expected to develop a creative and productive research program in temperate/transition zone grassland ecosystems managed for animal production that addresses issues of importance to Kentucky agriculture. Possible research fields within grasslands include: ecology, physiology and management of herbage legume and grass-legume associations; grazing systems for beef cattle, horses, and small ruminants; plant-animal relationships; and pre- and post-harvest forage quality. This position is an integral part of the forage-livestock programs of the Department and College and collaboration in the research, instruction, and extension efforts of other faculty is strongly encouraged. Opportunities for cooperative research are also available with scientists of the USDA-ARS Forage Animal Production Unit at Lexington and the USDA-ARS Animal Waste Management Research Unit at Bowling Green, KY. The successful candidate will develop a nationally and internationally recognized research program with strong publication and extramural funding records.

Instructional responsibilities include teaching a dual level under-

graduate/graduate course in grassland agriculture and the recruitment and direction of graduate students. Opportunities are also available in undergraduate education including teaching, advising and recruitment. Instructional effort will be expected to address the needs of students interested in equine as well as food animal enterprises.

### **QUALIFICATIONS:**

A Ph.D. in agronomy, range science, plant science or related disciplines with research experience in grassland agroecosystems. Supporting qualifications and/or experience could include: bovine and equine sciences; forage quality analysis; landscape-scale systems; GPS and GIS; remote-sensing techniques; non-destructive measurement methodology; experimental design and analysis; and spatial statistics and analysis.

### **RANK AND SALARY:**

The position is expected to be filled at the Assistant Professor or Associate Professor level, depending on qualifications. Salary, fringe benefits, and operating support are highly competitive with other leading land-grant universities.

### **APPLICATION PROCEDURES:**

Applications will be accepted until August 1, 2005 or until a suitable applicant is selected. The position is available October 1, 2005. To apply for this position # SO508209, a UK Online Application must be submitted at [www.uky.edu/ukjobs](http://www.uky.edu/ukjobs). The application should include three documents: a cover letter and curriculum vitae with the names and addresses of three referees (and have letters sent), university transcripts (scanned copies acceptable), and a 1 or 2 page statement of research interests relating to the focus of the position plus a brief statement of teaching interests and

philosophy. If you have any questions concerning how to apply, contact HR/ Employment, phone (859) 257-9555 press 2, or email [ukjobs@email.uky.edu](mailto:ukjobs@email.uky.edu).

Questions about the position can be directed to: Dr. Michael Barrett (Chair), Department of Plant and Soil Sciences, ([mbarrett@uky.edu](mailto:mbarrett@uky.edu)); telephone 859-257-5020, x 80709).

Applications and inquiries from women and minorities are encouraged. The University of Kentucky is an Equal Opportunity Employer. Applications will be accepted without regard to race, color, age, sex, religion, disability or national origin. The address of the College of Agriculture EEO Coordinator is Room S-101 Agriculture Science-North, Lexington, KY 40546-0091.

## **NEWSLETTER SUBMISSION Instructions and Deadlines**

ISSUE	DEADLINE
December	November 1, 2005

Please send text information as Microsoft Word or WordPerfect files, and pictures as JPEG or BMP files to:

**AL RANKINS, JR., Editor**  
Box 9555

Mississippi State, MS 39762  
Telephone 662-325-3341

E-mail: [arankins@pss.msstate.edu](mailto:arankins@pss.msstate.edu)